

Addressing the Needs of our Community Since 1965



Helping People, Changing Lives.

**community
Action**[™]
PARTNERSHIP
OF MADERA COUNTY

IMPACT REPORT 2025



+1 (559) 673-9173



contactus@maderacap.org



<https://maderacap.org>



Table Of Contents

About Us _____	2
Board of Directors _____	3
Message from the Executive Director _____	4
Mission, Vision & Core Values _____	5
Strategic Goals _____	7
Indirect Programs _____	8
Financials & Human Resources _____	8
Information Technology _____	9
Programs & Service Impact _____	10
Child Care Alternative Payment and Resource & Referral Program _____	11
Community Services _____	12
Victim Services _____	16
Madera County Child Advocacy Center _____	20
Head Start _____	21
The Volunteer Income Tax Assistance (VITA) Program _____	23
Social Responsibility _____	24





About Us



As a public non-profit 501(c)(3) organization, Community Action Partnership of Madera County, Inc. (CAPMC) has been dedicated to igniting positive community and individual level change since its inception in 1965. For over five decades, CAPMC has emerged as a force of empowerment, amplifying the voices of the "at-risk" and "invisible" populations.

CAPMC's approach is not merely reactive but strategic, channeling resources into goal-oriented interventions that pave the way for lasting impact. While we extend a helping hand in times of crisis, our true mission is to cultivate a thriving community by providing families with a safe and healthy environment, challenging individuals to achieve prosperity, and fostering personal growth and independence.

As Madera County's anti-poverty agency, CAPMC serves the low to moderate income residents annually through a broad spectrum of programs and resources. At the cusp of its 60th anniversary, CAPMC - as *part of the National Community Action network* - stands as a pillar in the vitality of Madera County, proving an unwavering spirit of hope through an array quality services and a multitude of anti-poverty programs.

Helping People,
Changing Lives



Board of Directors

Public Officials

Chairwoman Supervisor Leticia Gonzalez
Madera County Board of Supervisors and Finance Expertise

Council Member Steve Montes
Madera City Council

Council Member Jeff Troost
Chowchilla City Council

David Hernandez, Vice-Chairperson
Madera Unified School District

Deborah Martinez
Madera County Department of Social Services

Private Sector

Debi Bray
Madera Chamber of Commerce and Finance Expertise

Katherine Creek
Regional Head Start Policy Council- Parent

Donald Holley
Community Affairs and Public Affairs Expertise

Judge Eric LiCalsi - Chairperson
Madera County Judge and Attorney at Law

Molly Hernandez
Early Childhood Education and Development Expertise

Low Income Areas

Martha Garcia
Central Madera

Sheriff Tyson Pogue, Secretary/Treasurer
Eastern Madera County

Richard Gutierrez
Eastside/Parksdale

Diana Palmer
Fairmead/Chowchilla and Finance Expertise

Aurora Flores
Monroe/Washington

Community Services Block Grant (CSBG) is a federally funded grant that provides funding to Community Action Agencies to help alleviate poverty for 60 years.

CSBG federal funding supports organizational standards that provide the foundation of governance at CAPMC, requiring that CAPMC Board must have a tripartite structure: one-third democratically selected representatives of low-income individuals and families who reside in the geographic area served by the agency, one-third local elected officials (or their representatives), and one-third private sector community members. This balanced board is essential for effective organizational guidance, comply with fiduciary responsibilities as a board, and to ensure programs performance.

**Without CSBG
CAPMC's Board
Governance Structure
Would Not Exist**



Message From The Executive Director

Celebrating 60 Years of Service: A Legacy of Compassion and Impact

Dear Staff, Friends and Supporters,

As we celebrate 60 years of service to the Madera County community, we reflect on the extraordinary journey of the Community Action Partnership of Madera County, Inc. (CAPMC). Since our founding, we have been committed to empowering individuals and families to achieve self-reliance and build a brighter future. This milestone is not just a celebration of time, it is a testament to the lives we've touched, the challenges we've overcome, and the enduring strength of our community.

Over the past year, despite the many obstacles we've faced, your unwavering support has been the cornerstone of our success. Thanks to you, we've been able to provide essential programs that have made a lasting difference for thousands of individuals. Whether it's helping someone secure safe shelter, offering life-changing counseling services to survivors of domestic violence, or providing educational opportunities to children in need, your commitment has helped make it possible.

This year alone, we've seen countless stories of transformation. Families are finding hope where there was once despair, individuals are discovering new pathways to self-sufficiency, and our community is growing stronger together.

But our work is far from over. As we look toward the future, we remain dedicated to expanding our programs, reaching more families in need, and ensuring that no one in Madera County is left behind. The road ahead is one of opportunity, and with your continued support, we know we can achieve even greater things.

We are deeply grateful to every volunteer, donor, partner, and advocate who has joined us in this mission. You are an integral part of the success we've experienced over these 60 years, and together, we will continue to build a future where everyone in our community can thrive.

Thank you for your dedication, your generosity, and your belief in the power of community. Together, we are helping people, changing lives, and shaping a brighter future for all.

Here's to the next 60 years and beyond!

In Service,

Mattie Mendez

Executive Director
Community Action Partnership of Madera County, Inc. (CAPMC)





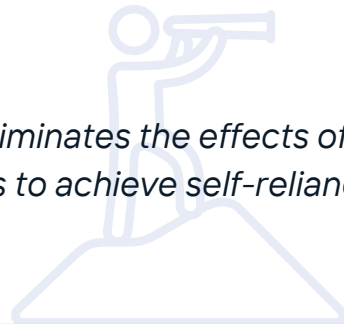
MISSION

Helping people, changing lives and making our community a better place to live by providing resources and services that inspire personal growth and independence.



VISION

CAPMC will be a premier social service agency that eliminates the effects of poverty by helping people obtain knowledge and skills to achieve self-reliance and economic stability...one life at a time.



CORE VALUES

TRUSTWORTHINESS



RESPECT



RESPONSIBILITY



FAIRNESS



CARING



CITIZENSHIP



Community Action Ethical Standards



COMMUNITY ACTION PROMISE

Community Action changes people's lives, embodies the spirit of hope, improves communities, and makes America a better place to live. We care about the entire community, and we are dedicated to helping people help themselves and each other."



Strategic Goals

In our ongoing pursuit of excellence and meaningful impact, we have outlined strategic goals that will guide our efforts in the coming years. These goals are crafted to enhance our effectiveness, broaden our reach, and deepen our impact on the communities we serve. From expanding our programs to reaching new demographics, our strategic goals are designed to ensure that we continue to make a tangible difference in the lives of those who need it most. Through focused action and collaboration, we are committed to achieving these goals and furthering our mission of positive change.

01 Premier Programs & Customer Service
Our programs achieve exceptional results and our customers are highly satisfied with the quality of customer service they receive.

02 Operational Excellence
We have formal, integrated systems that enable the organization to achieve efficiency, effectiveness and exceed customer expectations.

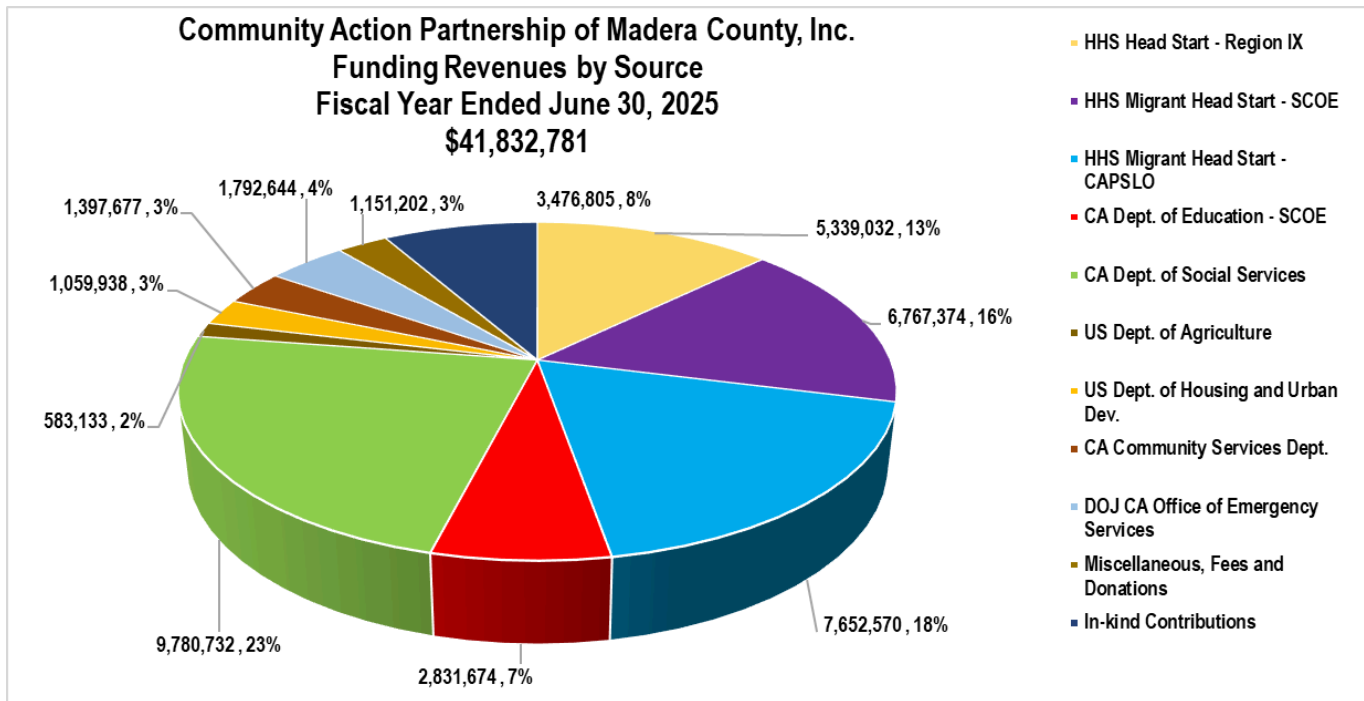
03 Community Partnering
We have an extensive, effective network of community partners that achieves tangible results for our program participants.

04 Capacity Building
The capabilities of our organization and employees are strengthened to better meet the needs of our community.



Financials

Through CSBG funding of \$341,644 CAPMC successfully leveraged over \$41,491,137 in fiscal year ended June, 30, 2025.



Human Resources



309

Total Employees



59

New Employees



Years of Service

Employee Health & Wellness

- Health Insurance
- Dental & Vision
- 403b
- Employee Assistance Program
- Life Insurance
- Wellness Incentives
- Telemedicine

Department	Number of EE	<5 Years	5-9 Years	10-14 Years	15-19 Years	20+ Years
Administration	1	0	0	0	0	1
Alternative Payment & Resource and Referral	11	7	2	1	0	1
Community Services	24	18	3	1	0	2
Fiscal	10	4	2	0	1	3
Fresno Head Start	80	14	15	10	14	27
Human Resources	3	2	0	0	1	0
Information Technology	3	1	1	0	1	0
Madera Head Start	158	64	25	17	18	34
Victim Services	19	13	3	1	0	2
Total:	309	123	51	30	35	70
Percentage by Years		40%	16%	10%	11%	23%



Xai Vang, Information Technology (IT) Program Manager, Oversees

Information Technology



The Wide Area Network established several years ago has played a vital role in ensuring that all Head Start Centers and departmental offices remain in constant communication. We have continued to prioritize enhancements to our CAPnet system, striving to ensure that all staff have access to the resources they need within a reliable and efficient platform.

Over the past year, the IT Department has successfully implemented significant upgrades to our network infrastructure and wireless services. By replacing aging, end-of-life hardware with modern, fully supported equipment, we have strengthened our security posture and improved overall system reliability. Additionally, the complete replacement of legacy wireless access points has greatly expanded Wi-Fi coverage across Head Start sites and office facilities, resulting in enhanced connectivity for both staff and programs.

These improvements have been especially meaningful for teachers at our Head Start Centers. Many have shared their appreciation for the expanded wireless coverage, which now extends outdoors. This advancement allows them to bring classroom iPads outside to play music and support a wider range of learning activities.

In previous years, their use of these devices was limited to indoor spaces due to connectivity constraints. In parallel with these upgrades, we developed a new Facilities Maintenance Request System. This system enables our maintenance team to respond more quickly and effectively to building maintenance needs, including emergency situations, improving overall response times and service delivery.

As our organization continues to become more data-driven and technology-focused, the IT Department remains committed to ongoing improvements to the CAPnet system. Our goal is to ensure that the Agency is equipped with the right hardware and software to support operational efficiency, streamline daily processes, and strengthen the services we provide to our community.



Programs & Service Impact



Child Care Alternative Payment and Resource & Referral Program (APP/R&R)



\$7,765,143.50

Paid to Child Care Providers for Child Care Services



1,148

Children Received Child Care Services



13

Individuals Obtained Child Care Licensure



30

Professional Development Workshops for Child Care Providers

Ana Plácido

Licensed Child Care Provider

Ana Placido came to resource and referral for assistance with her in home daycare license she was assisted with assistance with her application as well as a pre-licensing inspection and was supplied with Preventative health and safety items to prepare her home. Ana, was licensed August 2025 and this is her experience this far.

“My name is Ana Plácido, and I would like to share a little about my personal experience and how my life has changed over time. I worked for a long time in the fields—a job that was physically very demanding. It taught me discipline, patience, how to appreciate every opportunity, and never to give up, even during the most difficult times. Eventually, I decided to change careers and dedicate myself to working with children. It wasn't easy, but it has been incredibly meaningful to me. Caring for children has allowed me to grow, experience new things, and learn from them day by day. It fills me with joy to know that I am having a positive influence on their lives. These two jobs are very different, yet both have shaped the person I am today. My work in the fields gave me strength, while childcare has given me a sense of purpose—the drive to keep striving for excellence each and every day.

Aracely López Mendoza

Licensed Child Care Provider

My name is Aracely López Mendoza, and I am currently completing my first year as a licensed childcare provider in Madera County, CA.

When I first started out, I had the privilege of being mentored by an excellent childcare provider—someone whose mission is to deliver outstanding service to the families in our community, and who serves as a true inspiration to me in my own work as a provider.

Throughout this process (2024–2025), I received invaluable guidance and fundamental support—support that instilled in me a sense of security, readiness, and confidence—from the **Community Action Partnership of Madera County (CAPMC)** program. I was incredibly fortunate to receive assistance from Kareli Preciado; her support was instrumental in helping me maintain momentum and successfully complete the licensing process, providing me with the specific resources I needed to achieve my major goal.

Currently, the CAPMC subsidy program continues to be a tremendous asset, working closely alongside me by offering classes focused on child development and well-being, as well as providing engaging activities and exercises to share with the children in my care.

I am deeply grateful for their exceptional work and their unwavering dedication to me as a new childcare provider.



Ana Gudino, Community Services Program Manager, Oversees

Community Services



Low Income Home Energy Assistance Program (LIHEAP)

During Program Year 2025, the LIHEAP program successfully provided critical energy assistance services to low-income households throughout the community through a total contract amount of \$926,004. Through these funds, Community Action Partnership of Madera County Inc. assisted a total of 3,421 individuals residing in 1,221 households, helping families maintain safe and stable utility services while reducing the burden of rising energy costs.

Among those 3,421 individuals served, 785 individuals were seniors over the age of 60, demonstrating the program's continued commitment to protecting vulnerable older adults who are often at greater risk during extreme weather conditions. Additionally, 706 individuals identified as disabled received assistance, ensuring support for households facing increased medical and financial challenges. The program also served 483 children under the age of five, helping families with young children maintain healthy and safe living environments.

Overall, LIHEAP funding provided essential support to vulnerable populations across Madera County by preventing utility shut offs, supporting household stability, and improving the health and safety of low-income residents during 2025.



\$926,004

Contract Amount
For LIHEAP



1,221

Low Income
Households assisted



785

Seniors over the age of
60 assisted



483

Children under
the age of 5



706

Disabled population



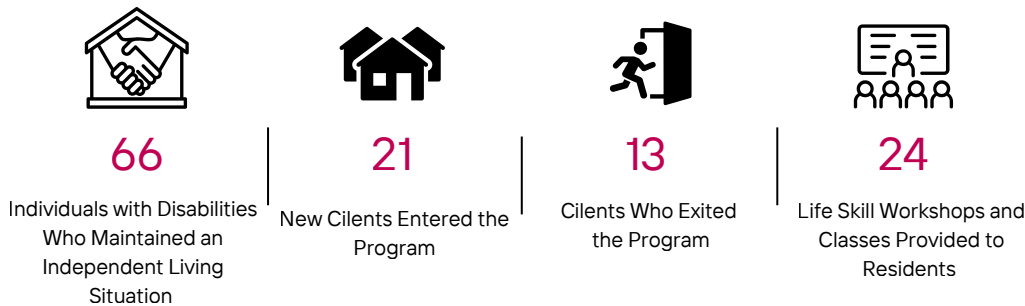
Community Services



The Shunammite Place

Shunammite Place continues to provide supportive housing and independent living services to vulnerable individuals in the community. A total of 66 individuals with disabilities successfully maintained an independent living situation through the support and case management services provided by the program. Additionally, 21 new clients entered the program while 13 clients successfully exited, demonstrating ongoing movement toward stability and self-sufficiency. To further support personal growth and independent living skills, staff facilitated 24 life skills workshops and classes for residents throughout the year.

Shunammite Place achieved several significant accomplishments during the program year. Two clients successfully exited the program and transitioned into their own single housing units, demonstrating progress toward permanent housing stability. One youth participant obtained his driver's license and is currently enrolled at Merced Community College pursuing a career as an automotive mechanic. Staff also provided intensive case management support to two newly enrolled clients in obtaining General Assistance benefits, assisting them throughout the entire application and approval process, including transportation to appointments, coordinating documentation, and advocating with eligibility workers.

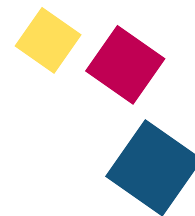


Community engagement and self-sufficiency remained key components of the program. Four clients participated in volunteer activities throughout the community, serving organizations such as Doors of Hope, Madera Rescue Mission, Holy Family Table, and CAPMC's Maintenance and IT departments. In addition, seven clients obtained employment during the reporting period, further supporting their path toward independence and financial stability.

The program also supported clients in securing long-term financial resources and maintaining overall wellness. Five clients were approved for Social Security benefits, including two clients approved for SSDI and three clients approved for retirement benefits. Most clients actively maintained their medical, dental, and behavioral health appointments and demonstrated increased self-advocacy skills by identifying their needs and seeking appropriate services and resources independently when necessary.

Strong community partnerships continued to enhance the level of support available to clients. Shunammite Place maintained a positive working relationship with the Madera County Food Bank, allowing clients to receive monthly food boxes to supplement their limited income. Staff coordinated directly with the Food Bank to arrange pick-up and delivery of food boxes to clients' homes when needed. Additionally, staff maintained a strong partnership with Madera County Behavioral Health to ensure clients received appropriate mental health and housing-related support services. Staff regularly collaborated with case managers and licensed professionals to advocate for clients and address immediate behavioral health or housing concerns.





In 2019, following the death of their husband and father, an elderly woman and her adult son experienced homelessness as the family lost its primary source of income and housing stability. During the early stages of the COVID-19 pandemic, the family was placed into emergency shelter with assistance from CAPMC through initial COVID relief funding. At that time, staff worked closely with the family to explore housing options, as the elderly woman had some income; however, progress was limited due to inconsistent engagement and difficulty sustaining follow-through on housing applications.

Over the following years, the family's connection with CAPMC was intermittent, including periods when the elderly woman received support through the Department of Social Services Adult Protective Services (APS) program. Engagement challenges continued, particularly with the adult son who struggled to actively participate in services and relied heavily on his mother to communicate with staff.

Despite these obstacles, CAPMC remained committed to supporting the family. The Housing Case Workers continued outreach efforts, maintained communication, and offered consistent encouragement and resources whenever the family re-engaged. Over time, trust was rebuilt, engagement improved, and the family became more receptive to case management support. Through continued persistence, coordination with partner agencies, and intensive case management, the family was eventually able to stabilize and make progress toward housing.

The family successfully transitioned from homelessness into the Shunammite Place housing program and continues to make positive progress. The elderly woman is now focusing on her health and consistently attends scheduled medical appointments, including visits with primary care providers and gastroenterology specialists. Program staff provide ongoing case management support, including weekly home visits to ensure the household remains safe and stable. Their Housing Case Worker provides the family with bus tickets and ride assistance to support transportation needs, as well as food boxes to help address food insecurity. Their Housing Case Worker also assist with connecting the family to appropriate community resources and services to support their long-term stability and well-being.

Their journey reflects the realities many families face when coping with grief, trauma, and long-term homelessness, and demonstrates CAPMC's commitment to meeting individuals where they are, even when progress is not immediate.

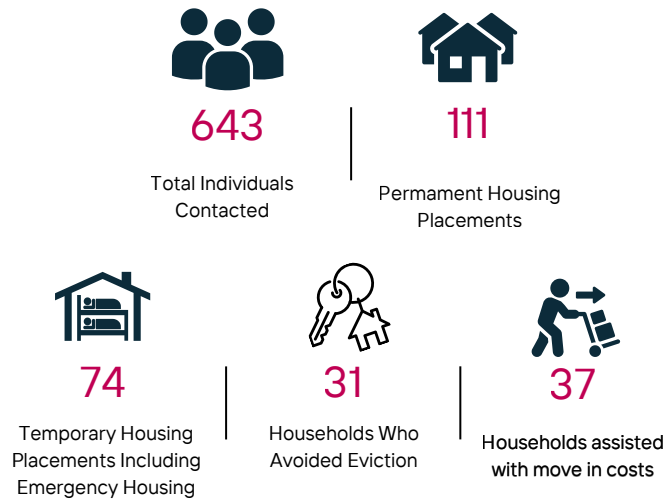
This success story highlights the importance of patience, consistency, long-term engagement, and trauma-informed support in helping families overcome barriers and move toward stability.



Community Services

Homeless Engagement for Living Program

CAPMC's HELP Center continues to serve as a critical access point for individuals and families experiencing or at risk of homelessness in Madera County. Through coordinated outreach and comprehensive case management, the HELP Center connected with a total of 643 individuals, ensuring they received timely support and linkage to essential resources. Staff worked closely with clients to assess needs, develop housing plans, and remove barriers to stability. As a result of these efforts, 111 individuals were successfully placed into permanent housing, while 74 were supported with temporary housing solutions to ensure immediate safety. In addition, 31 households were able to avoid eviction through early intervention and resource coordination, and 37 households received assistance with move-in support, helping them transition smoothly into stable housing. These outcomes reflect the HELP Center's commitment to proactive engagement, individualized support, and long-term housing stability.



Through a strong collaborative effort between CAPMC's HELP Center, Self-Help Enterprises, and Madera County Behavioral Health Services (MCDBH), a housing initiative in Eastern Madera significantly expanded access to safe, stable housing for vulnerable individuals and families. This partnership resulted in the development and occupancy of 22 units designated under the No Place Like Home (NPLH) program, which were set aside from the general housing inventory to specifically serve individuals experiencing homelessness with behavioral health needs. The project included 16 one-bedroom units, 3 two-bedroom units, and 3 three-bedroom units, ensuring a range of options for both individuals and families.

As a Coordinated Entry Access Site for Madera County, the HELP Center played a central role in identifying eligible participants and coordinating services for unhoused residents across the county. Through targeted outreach, housing navigation, and ongoing case management support, HELP Center staff ensured that individuals were prioritized appropriately and connected to both housing and supportive services. This coordinated approach not only facilitated successful placements into the NPLH units but also strengthened long-term housing stability. The collaboration highlights the critical role of the HELP Center in streamlining access to housing resources and reinforcing a system-wide response to homelessness in Madera County.



The HELP Center is a proud member of the Fresno Madera Continuum of Care (FMCoC).



Victim Services



Victim Services operates as a vital lifeline for individuals and families affected by crime, rape/sexual assault, and domestic violence - offering a wide array of compassionate and comprehensive support services. Trained advocates provide personalized guidance and assistance, helping survivors navigate the often complex and overwhelming aftermath of traumatic events. Advocates offer emotional support, practical resources, and advocacy to ensure survivors receive the care, protection, and justice they deserve. Victim Services stands as a beacon of hope and empowerment, dedicated to helping survivors heal, rebuild their lives, and regain a sense of safety and control in the face of adversity.

Domestic Violence Program

The Domestic Violence Program offers a range of services tailored to the needs of each individual, from sheltering to counseling with the ultimate goal of supporting the path of all survivors as they work to become self-sufficient and free from violence.



279

Crisis Intervention



856

Individual or Group
Counseling/Support



443

Criminal/Civil Legal
Advocacy



217

Assistance with
Protective/Custody Orders



Victim Services



Domestic Violence Program

In June 2025, Sasha and her six-month-old daughter Mimi were referred to CAPMC Victim Services by the Madera Rescue Mission. Shasha had been dropped off at the Mission by the Madera Police Department after a domestic violence incident she endured by her husband. Shasha had only been in the country for two weeks prior to this incident in which she was sexually and physically assaulted. Her spouse forced her and her infant child to sleep on the floor while he slept on a king-sized bed in a 5-bedroom house. She was not allowed to leave the room. Sasha and her child were placed in emergency shelter and provided emergency food and clothing. An Advocate assisted Sasha in reporting the incidents she faced from her husband who had brought her from another country through an arranged marriage. While she was at the shelter, Advocate transported her to the hospital, grocery shopping and other necessities. Shelter staff were able to get her a free cellphone and Wi-fi. Since many of her documents were withheld by her abuser, an Advocate was able to assist her in re-applying for their replacement. She was able to enroll her in WIC for her child as well as helped her apply for cash aid and food-stamps. Sasha was able to overcome her fear and learned to use public transportation, opened a bank account and with the help of a local church, she was able to move into a small apartment unit.

Transitional Housing Program

In May 2025, a victim (whom we will refer to as Donna) was referred to our office by the Department of Social Services after reporting domestic violence. Her husband came home drunk one afternoon after going out with his friends and started arguing with Donna. The argument led to insulting names, punching her in the face, and kicking her in different areas of her body. When Donna came to CAPMC Victim Services, she was seeking assistance in obtaining a restraining order. She feared her husband would come back and hurt her and her two children. After her husband left, Donna wanted to take the opportunity to leave the relationship altogether. She did not want her husband to find her. Unfortunately, without her husband's income her housing choices were very limited, almost non-existent. The Transitional Housing (XH) Caseworker worked with Donna to complete a needs assessment. Donna and her two children were moved into one of the transitional housing program units. The XH Caseworker worked with Donna to write her narratives needed for requesting a restraining order. The order was filed and then granted as well as custody of her two children. One of Donna's obstacles identified by the needs assessment was that she lacked a valid identification. Her Guatemalan identification had expired and needed to be renewed. The closest Guatemalan Consulate was three hours up North in San Francisco or the one in Los Angeles four hours south. Donna had previously been to the Los Angeles Consulate so the XH Caseworker and Donna worked on a list of items that were needed for renewal, found transportation to and from Los Angeles as well as local transportation to her appointment that was scheduled once the XH Caseworker and Donna were sure that it was safe for her to travel and that Donna had all documents needed for the renewal. Donna worked prior to entering transitional housing and continued to do so while in the program. She saved her money and was able to find a new place to live that she could afford. Donna shared that she was grateful for her stay in the transitional housing program because it allowed her to learn about community resources and activities that she could do with her children to spend quality time with them without having to worry about money. Also, because the XH Caseworker worked with her to set up personal goals for herself like getting a driver's license. Donna and her children are doing well.



Victim Services

Martha Diaz Shelter

The Martha Diaz Shelter provides up to 30 days of shelter, food, and clothing to men, women, and children who are in immediate danger of domestic violence.



699

Bed Nights



34

Individuals



30

Emergency Food and Clothing

Transitional Housing

The Transitional Housing Program supports transitional housing, short-term housing assistance, and supportive services, including follow-up services that move victims of crime into permanent housing.



32

Individual Counseling



14

Individual Advocacy



11

Rental Assistance

Victim Witness Assistance Program

The Victim Witness Assistance Program ensures that victims and witnesses of crime, who have suffered physical, financial, or emotional trauma, are informed of their rights, and receive the assistance and protection to which they are entitled to under the law.



320

Crisis Intervention



404

Individual Counseling



565

Criminal Advocacy/
Accompaniment



40

Assistance In
Obtaining Protection
or Restraining Order



16

Victims of Crime
Compensation Claims
Submitted

Unservd/Underserved Victim Program

The Unservd/Underserves Victim Program is to increase access to culturally appropriate victim services for unservd/underserved victims/survivors of crime.



46

Crisis Intervention



6

Presentations to
Underserved
Population



13

Outreach Events



83

Provided Information
About the Criminal
Justice System



118

Criminal Justice
Advocacy or
Accompaniment





Victim Services

Rape/Sexual Assault Program

The Rape/Sexual Assault Program provides support for survivors of rape/sexual assault, regardless of how long ago it happened or whether it was reported to authorities.



347

Crisis Intervention



523

Individual Counseling



319

Criminal Advocacy/
Accompaniment



106

Individual Advocacy



5

On-Scene Response



Jennifer Coronado, Victim Services Program Manager, Oversees

Madera County Child Advocacy Center (CAC)

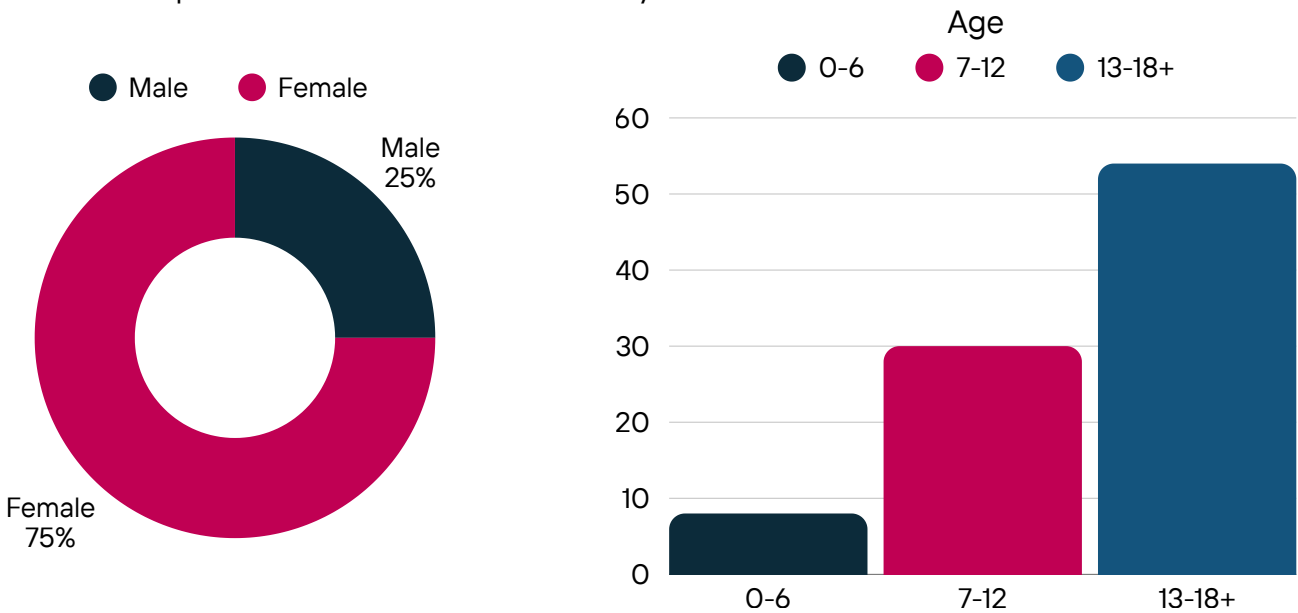


The Madera County Child Advocacy Center (CAC) provides a centralized victim-centered hub for the Child Forensic Interview Team (CFIT) to deliver direct services onsite during the child and family's initial visit to the CAC and thereafter. Direct services include providing support, advocacy, medical, mental health services, referrals, investigative guidance, and facilitation of continuation of care. The services provided are free, comprehensive, and designed to meet the unique needs of each child and family.



92

Child Forensic Interviews Conducted



Madera County Child Forensic Interview Team (CFIT)



"Working together to improve the life of a child."

Madera County Child Forensic Interview Team (CFIT) Partners



BERRY

A special *thank you* to Berry Development for generously waiving the rental cost of the Madera County CAC since 2019. Through this donation, the Madera County CAC is able to provide a child-focused setting designed to provide a safe, comfortable and neutral place where forensic interviews and other CAC services can be appropriately provided for children and families.

Maritza Gomez-Zaragoza, Head Start Director, Oversees

Head Start

Head Start programs provide comprehensive support for children's development from birth to age 5, focusing on early learning, health, and family well-being. Emphasizing the importance of family involvement, staff actively engage parents, recognizing their participation as essential for positive child outcomes. These services are offered at no cost to eligible families, Head Start preschool programs cater to children ages 3 to 5, and Early Head Start supporting families with children from birth to age 3, including expectant families. Through tailored learning experiences, Head Start programs help children build the skills and readiness necessary for success in school and beyond.

Madera Head Start Madera Early Head Start



759

Households Served



931

Children Served



66,588.64

Volunteer hours donated by individuals of low incomes

Fresno Head Start



201

Households Served



241

Children Served



31,562.39

Volunteer hours donated by individuals of low incomes



Head Start



The Strengthening Families Program (SFP) is an evidence-based family skills training program for high-risk and general-population families that is recognized both nationally and internationally. Parents and youth attend weekly SFP skills classes together, learning parenting skills and youth life and refusal skills. They have separate class training for parents and youth the first hour, followed by a joint family practice session the second hour. The purpose of the SFP is to enhance family relationships, communication, and parenting skills while reducing risk factors that contribute to substance abuse, delinquency, and other behavioral problems in children and adolescents. SFP aims to promote positive family functioning, resilience, and protective factors that support healthy child development and prevent the onset of social, emotional, and behavioral challenges.



82

Program Graduates
(Adults, Children, & Teens)



Positive Parenting Program (Triple P) is a evidence-based parenting intervention designed to equip parents and caregivers with the skills and strategies needed to raise confident, resilient, and well-adjusted children. The program offers a comprehensive framework of evidence-based techniques and resources aimed at promoting positive parent-child relationships, preventing behavioral problems, and enhancing child development. Its purpose is to empower parents to effectively manage common parenting challenges, such as disobedience and aggression, while fostering a nurturing and supportive family environment. By providing practical tools and support, Triple P aims to reduce parental stress and promote positive outcomes for both parents and children, ultimately contributing to healthier, happier families.



39

Program Graduates
(Adults, Children, & Teens)



The Volunteer Income Tax Assistance (VITA) Program



The VITA Program offers free tax help to people who generally make \$75,000 or less, persons with disabilities, the elderly and limited English speaking taxpayers who need assistance in preparing their own tax returns. IRS-certified volunteers provide free basic income tax return preparation with electronic filing to qualified individuals.



504

Tax Returns
Filed



\$872,229

In federal refunds back
to families in the
community

Thank you to our 2025 volunteers!



Social Responsibility

As public servants, CAPMC's mission of "helping people, changing lives, and making our community a better place to live by providing resources and services that inspire personal growth and independence" puts team members in a position to radiate a spirit of hope and service throughout our community.

Relay for Life Campaign

Throughout the year, CAPMC departments coordinate and take part in fundraising activities to support the Relay for Life Campaign.



\$9,150

Was Raised for Relay for Life by
CAPMC



THANK YOU
FOR YOUR
CONTINUED SUPPORT!



COMMUNITY ACTION PARTNERSHIP OF MADERA COUNTY, INC.
1225 GILL AVE, MADERA, CA 93637
WWW.MADERACAP.ORG

Document Designed by Kimberly Rojas-Perez
Executive Administrative Aide
krperez@maderacap.org